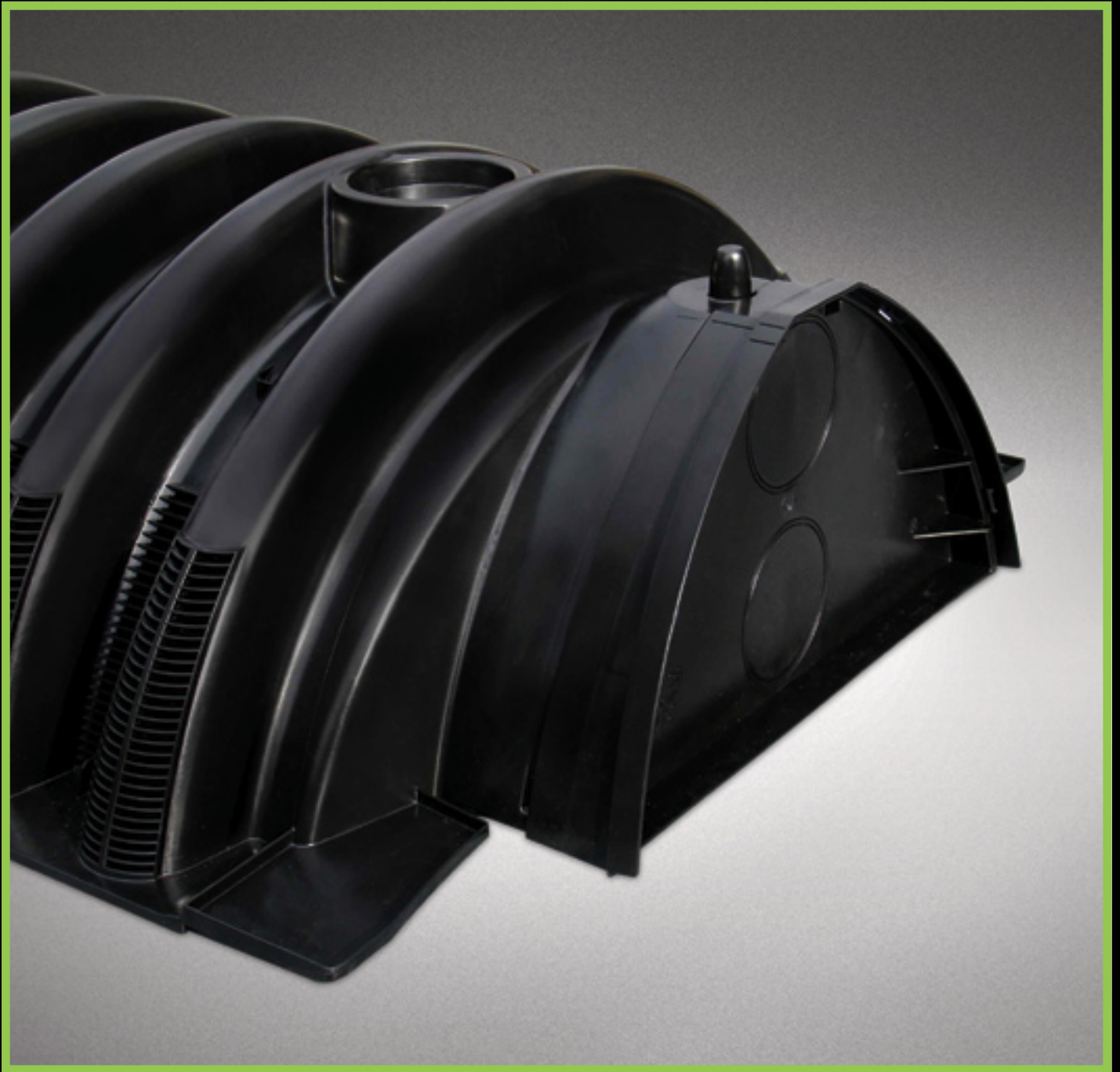




BioDiffuser™ Leachfield Chamber

BioDiffuser™ ARC™ 36 Leaching Chamber



Save time and labor with the
ARC 36 Septic Leaching Chamber.



BioDiffuser ARC 36 Leaching Chamber

Save time and labor with the ARC 36 Septic Leaching Chamber.

Leaching chambers are successfully replacing gravel and pipe in septic leach field installations. Their lightweight construction offers lower installed costs and less intrusive installations.

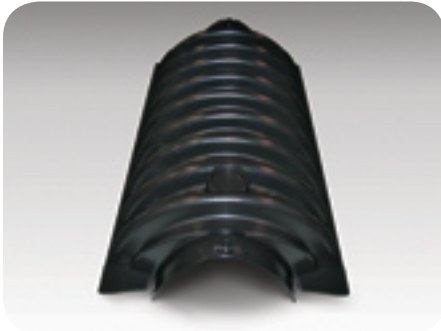
Engineered for optimal performance.

The new ARC 36 septic leaching chamber is a sturdy, lightweight plastic unit that combines maximized infiltrative surface area and storage capacity with an improved structural design to handle most any conventional leach field system challenge.

This unique combination allows for increased effluent dispersal performance and improved structural integrity as well as ease of installation and simplified contouring capabilities.

The result is an effective solution for both new onsite wastewater system installations and existing septic leach field repairs.

Now you can save labor, time on the job, and materials with the ARC 36 chamber without sacrificing performance.



Injection-molded, lightweight and sturdy design.



Integral articulating joint.



Superior joint design that gets stronger during backfill.



Innovative design for maximum flexibility.

An effective solution for new onsite wastewater installations and existing leach field system repairs.

Design features

- Injection-molded, lightweight and sturdy design.
- 20-degree integral articulating joint that is ideal for either straight or contoured septic leach field applications.
- True corrugated chamber design eliminates flat surfaces and provides increased load bearing capability in the trench.
- Design also incorporates a modified post and dome engagement mechanism for added strength at critical joint connections.
- Designed to accommodate both gravity-fed and pressure-dosed systems.

Maximum job site flexibility. Easy installation.

- Integral articulating joint.
- A universal inlet/outlet end cap.
- Inspection vent ports on every unit with easy-to-remove knockouts for maximum job site flexibility.
- Convenient five-foot lengths are easy to handle.
- Quickly installed by one person into three-foot wide trench or bed applications.
- Unique stacking post feature for increased pallet stability.



Convenient five-foot lengths are easy to handle.



Easily transported to the job site.



Ideal for contoured applications.



BioDiffuser™ Leachfield Chamber

Product Specs



BioDiffuser™ Leachfield Chamber

ADS BioDiffuser ARC 36 Leaching Chamber Specification

Scope

This specification describes the BioDiffuser ARC 36 chamber unit for use in onsite wastewater disposal applications.

Material properties

Each chamber shall be manufactured from high-density polyethylene as defined and described in IAPMO PS 63.

Installation

Installation shall be in accordance with ADS installation procedures and those issued by the local health department regulations.

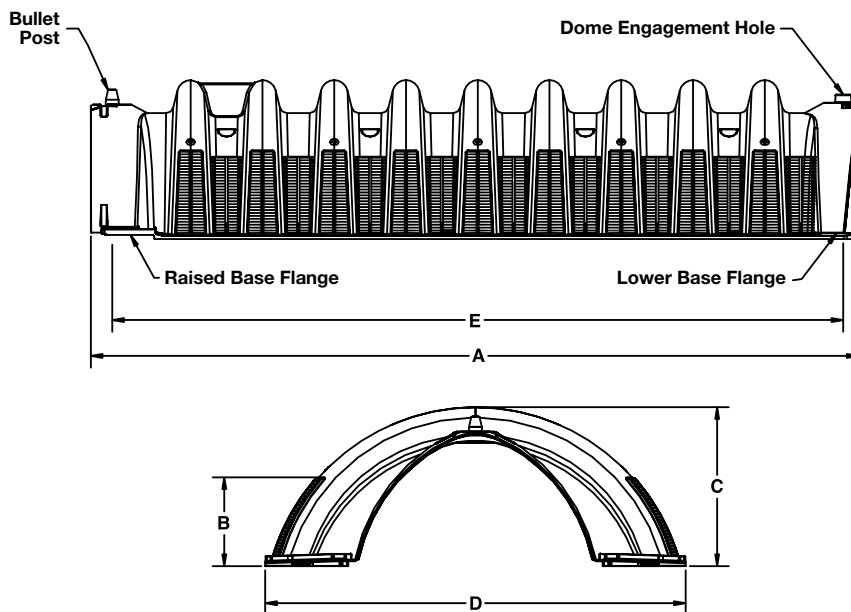
Chamber requirements

BioDiffuser ARC 36 chambers are manufactured from high-density polyethylene with an open bottom, solid top and louvered sidewalls. Sidewall louvers shall be designed to minimize soil intrusion.

Chamber shall meet the load rating of H-10 (16,000 lbs. per axle) with a minimum of 12 inches of cover when tested in accordance with IAPMO PS 63 and installed in accordance with manufacturer's installation procedures.

Chamber connection

Each chamber shall interlock with an integral articulating joint. Articulating joints shall have a free range of horizontal rotation of 20 degrees, with a maximum of 10 degrees in either direction. Articulating joint shall be constructed by placing the dome engagement hole of the incoming chamber over the bullet post of the previously-installed chamber, with final engagement occurring when the lower base flanges of the incoming chamber under-lap the raised base flanges of the previously-installed chamber.



BioDiffuser ARC 36

Nominal Dimensions and Specifications

Length (A)	63"
Repeat Length (E)	60"
Side Wall Height (B)	7.25"
Overall Height (C)	12"
Overall Width (D)	34.5"
Capacity	8 cu. ft. (60.14 gal.)
Weight	16 lbs.
Pallet Quantity	60 chambers
Van (Box Trailer) Quantity	25 pallets
Flatbed Quantity	22 pallets

ADS Terms and Conditions of Sale are available on the ADS website, www.ads-pipe.com



ADVANCED DRAINAGE SYSTEMS, INC.
4640 TRUAMAN BLVD., HILLIARD, OH 43026
800-821-6710 www.ads-pipe.com

Advanced Drainage Systems, the Green Stripe, BioDiffuser and Arc are registered trademarks of Advanced Drainage Systems, Inc.
© 2006 Advanced Drainage Systems, Inc. (1170)
#10568 (04/06)

THE MOST
ADVANCED
NAME IN
DRAINAGE
SYSTEMS®