

## ADS BioDiffuser™ SPECIFICATION

### Scope

This specification describes the Standard, High-Capacity, Bio 2, and Bio 3 BioDiffuser units for use in onsite wastewater disposal applications.

### Chamber Requirements

BioDiffuser chambers are manufactured from high-density polyethylene with an open bottom, solid top and louvered sidewalls. Sidewall louvers shall be designed to minimize soil intrusion.

Chamber shall meet the load rating of H-10 (16,000 lb per axle) with a minimum of 12 inches of cover when tested in accordance with IAPMO PS 63 and installed in accordance with ADS installation procedures.

### Chamber Connection

Each chamber shall interlock with the beginning of the next chamber by overlapping post and dome while engaging overlapping flanges.

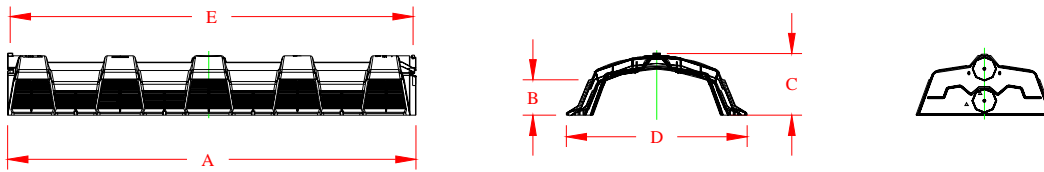
### Material Properties

Each chamber shall be manufactured from high density polyethylene resin as defined and described in IAPMO PS 63.

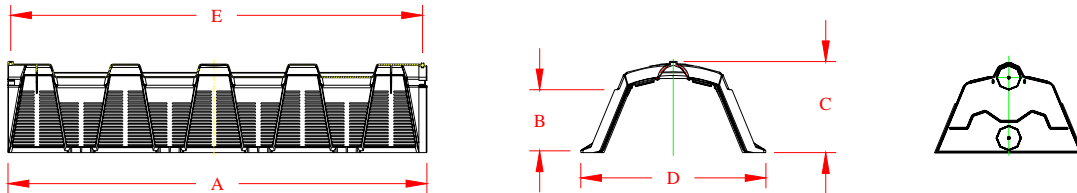
### Installation

Installation shall be in accordance with ADS installation procedures and those issued by the local health department regulations.

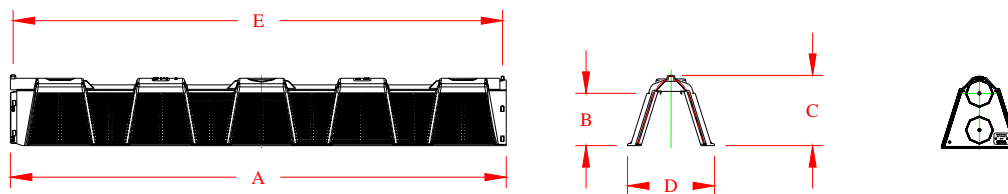
**Standard Chamber**



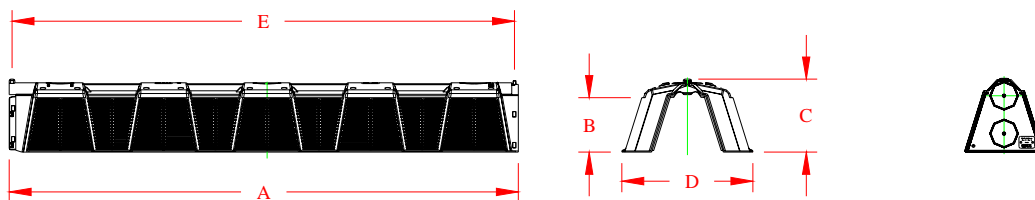
**High Capacity Chamber**



**Bio 2 Chamber**



**Bio 3 Chamber**



Chambers	11" Standard	14" High Capacity	16" High Capacity	Bio 2	Bio 3
ADS Product #	1100BD	1400BD	1600BD	1500BD	2200BD
Length (A), in.	76	76	76	87	87
Repeat Length (E), in.	75	75	75	86	86
Side Wall Height (B), in.	6.35	9.68	11.17	9.03	9.03
Overall Height (C), in.	11	14	16	12	12
Overall Width (D), in.	34	34	34	15	22
Capacity, ft <sup>3</sup> (gal)	9.21 (68.42)	11.91 (89.13)	13.58 (101.63)	4.99 (37.34)	8.45 (63.17)
Weight, lbs.	27	37	35	19	28
Units/Pallet	27	38	45	90	70
Truck Load Quantity*, pallets	39	21	21	14	14

\*End Caps may reduce truck load pallet quantity.